

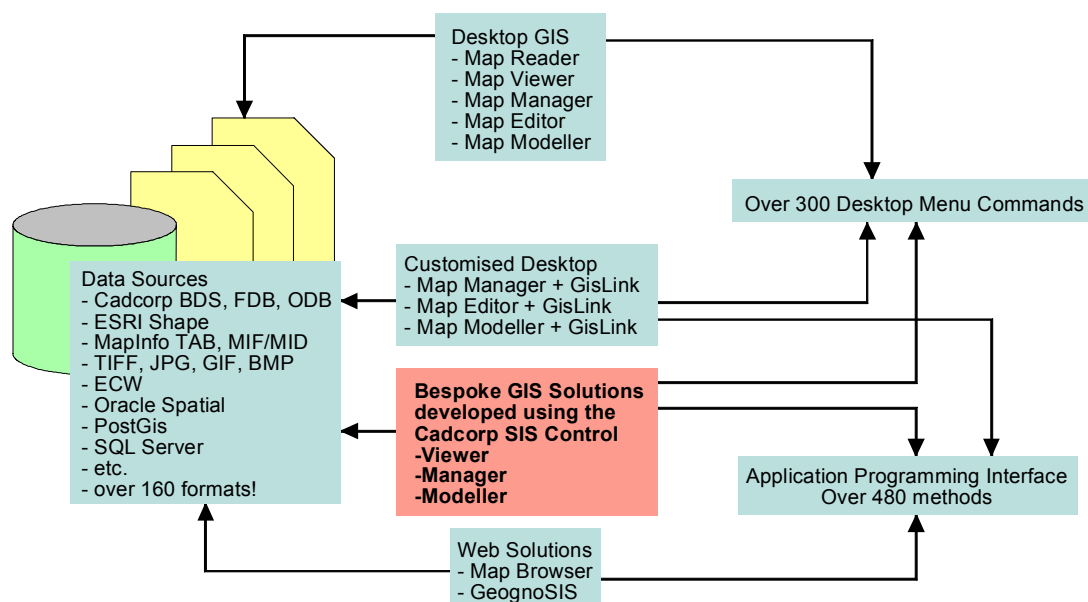
## The Best of Both Worlds

A fundamental design principle of the Cadcorp SIS suite of Geographical Information System (GIS) software is that all products in the range utilise the same core technology. The Cadcorp SIS Control, an ActiveX component for development of bespoke GIS solutions, therefore offers the same comprehensive range of tools and functionality available to the desktop user of Cadcorp SIS.

The benefit of this integrated approach to software design is that Cadcorp SIS software can be deployed as an "out-of-the-box" GIS solution such as Cadcorp SIS Map Modeller, as a customised desktop solution using Cadcorp GisLink, as a fully bespoke GIS application developed with the Cadcorp SIS Control, or as an interactive Internet application using Cadcorp GeognoSIS. Whichever approach is used the end user is guaranteed that there will be total compatibility with users of other Cadcorp SIS products and applications.

The Cadcorp SIS Control offers the 'best of both worlds' to GIS developers:

- The Cadcorp SIS Application Programming Interface (API) provides nearly 500 methods for the creation, editing, analysis, display and export of GIS data, with full control over the user interface of the application
- The Cadcorp SIS command set enables developers to invoke any of over 300 'desktop' commands, including 'wizards' for adding overlays, defining thematic display, creating spatial queries and formatting printed output



Why reinvent the wheel when the full functionality of Cadcorp SIS is available to the bespoke GIS developer? Cadcorp SIS desktop products enable users to quickly analyse and display GIS data through the use of 'wizards'. These wizards are equally available to the custom developer, shortening development time from months to a matter of days or even hours!

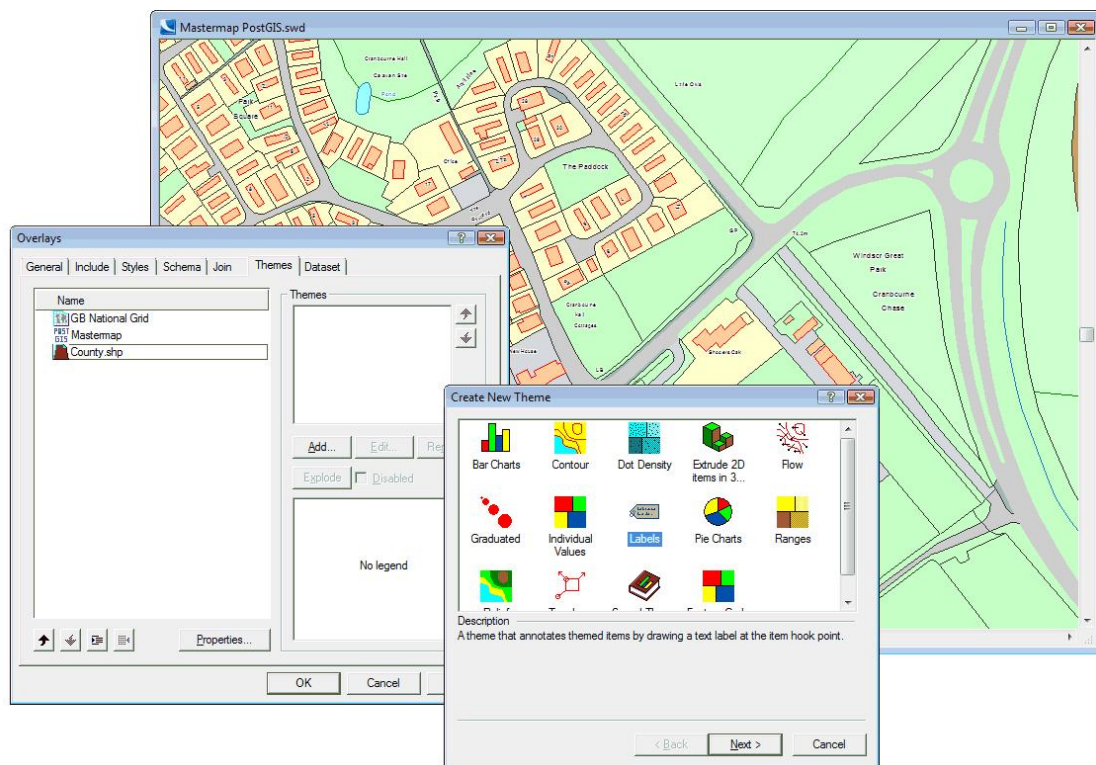
## Sis.Level = 2 - The Ultimate in Rapid Application Development

Deploying a bespoke GIS application requires a minimum of *one line of programming code*:

```
Sis.Level = 2
```

This is sufficient to enable the user of your application to open any of the 160+ GIS data formats, to zoom in, out and pan across the data, to set the visibility and editability of any dataset, to create thematic maps, to modify the stylistic display of the data including variable transparency of raster maps, even to edit and save data.

Setting the 'level' of the Cadcorp SIS Control allows you to expose just the functionality required by your application. Level 2 gives the user all the power of the flagship desktop product, Cadcorp SIS Map Modeller. Setting the control to Level 3 restricts the functionality of your application to viewing of GIS data, enabling you to develop cost-effective solutions to the specific needs of your target users.



Of course you will want to provide more of a user interface to your application than simply a window with a map in it. Whether you are writing a 'standalone' GIS application, or embedding GIS functionality into a specialised business program, you have full control over the functionality exposed to the user.

If the Overlay and Theme Wizards shown above offer more functionality than your users require, it is easy to write code to display a list of available overlays, and provide tools to apply thematic display to the selected overlay from a drop-down list.

You can choose whether to provide a toolbar with buttons for zooming in and out, or simply let Cadcorp SIS detect the scroll wheel of the mouse for zooming. Pressing and holding the mouse wheel gives your user the 'sticky hand' for panning across the map, and the scroll bars around the map window can be displayed or hidden under program control.

All the Cadcorp SIS 'context menus' can be displayed when the user selects entities on the map, and you have full control over which options are displayed. You can add your own context-sensitive menu commands to these popup menus, presenting functionality which is specific to your application only when certain conditions are met.

Of course the Cadcorp SIS Control can be placed on more than one form in your application, allowing you to develop a multiple document interface (MDI), or to create popup views of search results, key maps or symbol picker dialogs.

If your application exposes 'Modeller' capabilities, you can display 3-dimensional map views just as easily, with control over the 'eye' and 'target' positions within the 3D world. Full 3D 'walkthroughs' can be created and displayed, and 3D surfaces can be modelled and analysed.

### **Mind Your Language**

The Cadcorp SIS Control is an ActiveX component (OCX) allowing you to develop in the Windows programming language of your choice, whether that's Visual Basic, Delphi, C++, Visual Studio.NET (VB and C#), even Visual Basic for Applications (VBA) in a Microsoft Access application. The SIS Control can be 'wrapped' in your own custom control enabling a large team to harness the power of Cadcorp SIS development without every developer becoming an expert in the underlying functionality.

### **Where Do I Start?**

The Cadcorp Software Developer Kit (SDK) includes a development licence for the SIS Control, plus a fully licensed Cadcorp SIS Map Modeller, the flagship desktop GIS system.

As a developer you can utilise the comprehensive capabilities of Cadcorp SIS Map Modeller to prepare base mapping for your application, to develop resources such as symbol libraries and theme specifications, and to prototype functionality such as external database links.

Once your application is developed it can be deployed to your users, licensing only the functional level required with Cadcorp ActiveX runtime licence (ActiveX Viewer, ActiveX Manager or ActiveX Modeller). You can provide multi-level functionality to your users, restricting some to basic viewing and printing, while enabling others to use the full power of the Cadcorp SIS environment. Deployment licensing costs reflect the level of functionality provided.

Of course your application will be compatible with the full range of Cadcorp software and data formats, as well as providing access to over 160 other GIS, CAD, raster and database formats.

The Cadcorp SIS Control really does provide the 'best of both worlds': a rapid application development environment harnessed to a full-function professional GIS system.