

An Introduction to Cadcorp SIS

| | |
|--------------------|---|
| Aim: | To introduce the student to the basic elements of Cadcorp SIS. |
| Objectives: | At the end of this module students should be able to: <ul style="list-style-type: none">▪ Start Cadcorp SIS from the Windows taskbar or Windows shortcut;▪ Be familiar with menus and toolbars;▪ Identify the main elements of the interface. |
| Keywords: | <i>Spatial Information System, Menus, Toolbars, Map Window, Title Bar, Workspace Window, Views, Status Bar, Position Bar</i> |

Some Background Information

Cadcorp **Spatial Information System (SIS)** is a GIS and a name used to describe the Cadcorp product range.

Cadcorp SIS software is available as an 'out-of-the-box' **Desktop GIS** for map data viewing, editing, creation and modelling; as **Developer Kits** to enable bespoke GIS application creation and integration; as an **ActiveX** based runtime for application deployment; as a **Web-based GIS** for web application creation and data distribution and finally as a **Mobile GIS**. All Cadcorp software uses the same methods and code, ensuring consistency and inter-operability across the product range.

The Cadcorp SIS product suite: one common software source – integrated GIS.

The Product Wheel

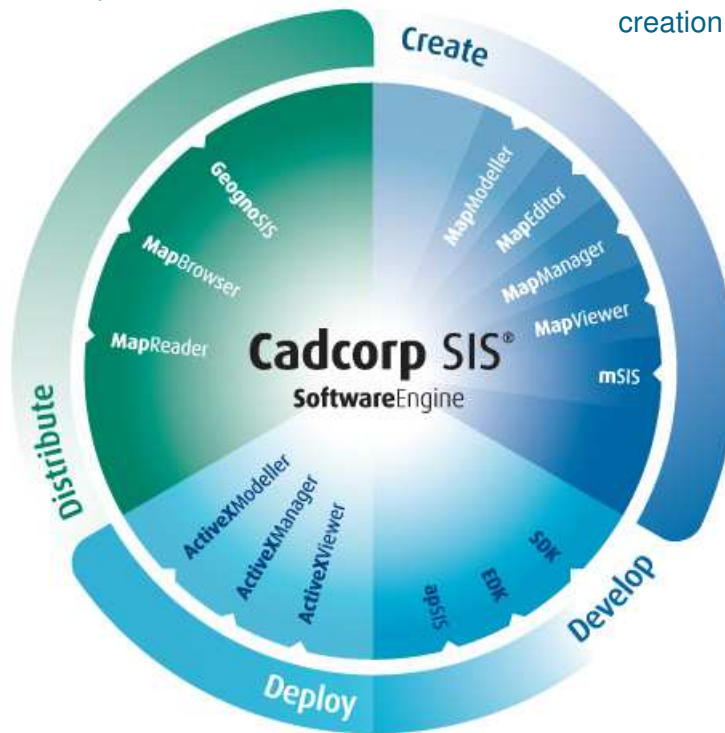
The **dark blue** section of the Product Wheel includes 4 related desktop GIS products:

- Map Viewer
- Map Manager
- Map Editor
- Map Modeller

Cadcorp SIS web-based GIS products include Cadcorp **GeognoSIS** and Cadcorp SIS **Map Browser**.

Cadcorp SIS Desktop products are used for map data viewing, editing, creation and modelling.

Map Reader is a free data viewing tool.



Cadcorp **mSIS** is an easy to use data capture application for the Pocket PC platform.

Cadcorp SIS **ActiveX runtime licences** enable developers to deploy applications written using the Cadcorp SIS Software.

The Cadcorp SIS **Developer kits** can be used to develop desktop and web based applications and to integrate with, or geo-enable, third party software products.

Each step up in the wheel represents an increase in functionality:

Map Viewer is an intuitive application to view and print over 160 GIS data sources with additional thematic display capabilities.

Map Manager is the mainstream GIS application to capture, edit, manipulate, view, analyse and export spatial information. Map Manager uses powerful Wizards to guide the user through spatial searching, thematic presentation and printing.

Map Editor is a professional GIS, which offers all the capabilities of Map Manager, with extended data capture and editing tools plus advanced spatial and topological analysis. Map Editor is perfect for geospatial data creation, editing and maintenance.

Map Modeller extends the functionality of Map Editor, designed for advanced GIS visualisation and analysis with three-dimensional capabilities.

Before We Start

Cadcorp SIS requires significant use of the mouse and keyboard to perform various tasks. In general here is some terminology that will be used:

Left-Click means to position the cursor and click on the primary mouse button (left). From here onwards in these notes the term “Click” is used to mean Left-Click.

Right-Click means to position the cursor and click on the secondary mouse button (right). A Right-Click is often associated with what’s known as a local menu; tools or options that are relevant to the current selection on screen.

Double-Click means to position the cursor and click on the primary mouse button (left) in quick succession.

Click and Drag means to position the cursor and click on the primary mouse button (left) and hold, move the mouse cursor to a new position and release.

Most mice are **wheeled**. This means there is a central wheel which can be pushed forwards and backwards, as well as be used for a click action.

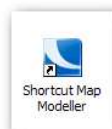


❶ These descriptions illustrate the standard settings; the **Windows Control Panel** can be used to alter these.

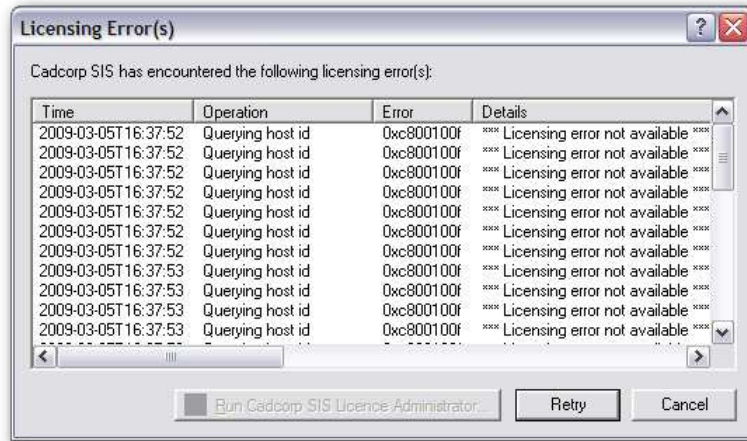
Starting Cadcorp SIS

Cadcorp SIS can be started from the Windows Taskbar using **Start > All Programs > Cadcorp SIS 7.0 >**

Or from a Windows shortcut:

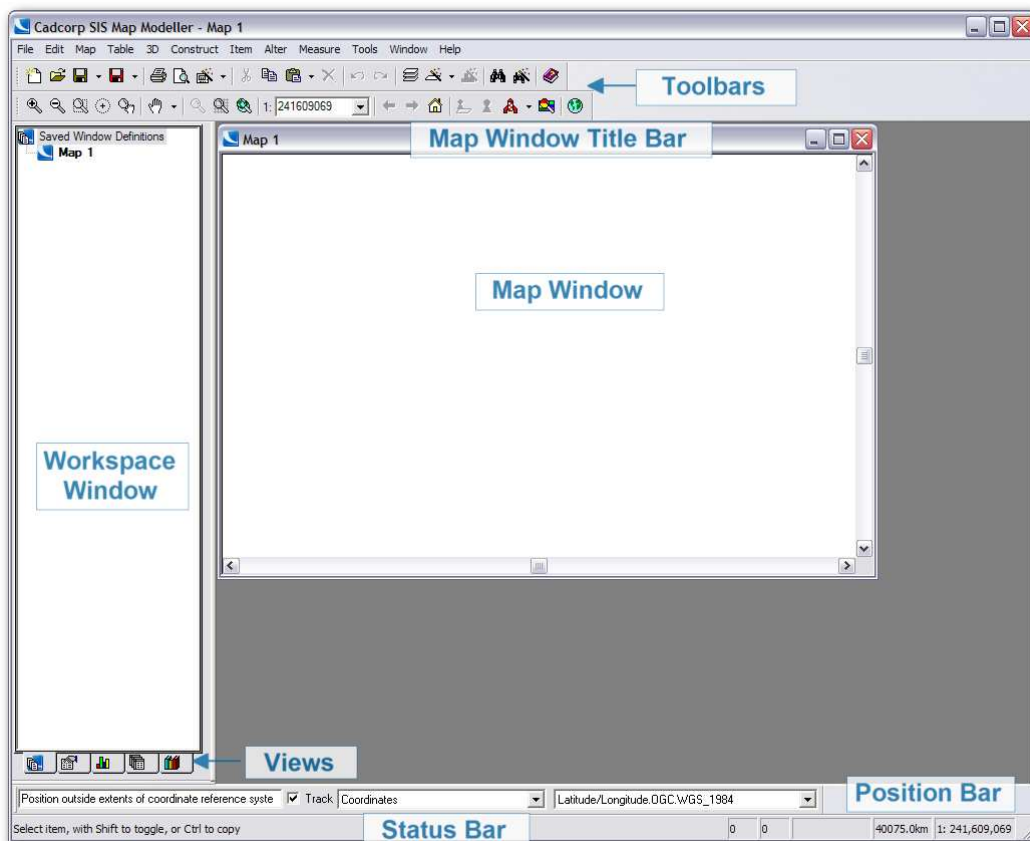


❶ Cadcorp SIS products are licensed for use in your organisation. On start-up a “License Error” may occur, please contact your System Administrator:



The Interface

The terminology used to describe the main elements of the interface is important:



Menus are drop-down lists of tools. These start with the Windows standard **File** and **Edit**, and finish with **Help**. Each menu may have sub-menus which allow access to further associated tools.

① Some menu items have a keyboard shortcut which may be preferable. For example, the **F1** key runs **Help > Contents**.

Toolbars are collections of buttons with similar functions and can be docked according to user preference around the screen. Each tool is represented by an icon.

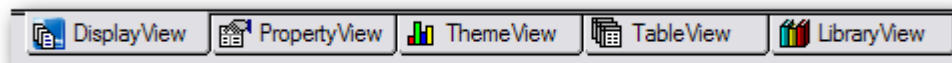
Quite often a tool can be found on a toolbar and a menu, this allows the user to select tools from the most convenient location. In addition further menus are available using the local menu by using a **Right-Click**.

The **Map Window** is the area in which **Overlays** containing geospatial data will be displayed.

Clicking on the **Map Window Title Bar** allows the user to activate that window; useful when multiple windows are open.

The **Workspace Window** is the area (or panel) to the left of the screen; it allows settings and properties to be changed and provides access to various commands and operations.

The **Workspace Window** has five tabs (or **Views**):



① Further Views called the **Program View** and the **GPS View** can be added here. Use **Tools > Workspace Window >** and select as appropriate. Also the Workspace Window can be hidden using **Tools > Workspace Window > Show**.

The functionality of each **View** is described in detail as appropriate in later modules. To begin, work will be carried out in the **Display View**.

The **Position Bar** is an area where co-ordinate display modes are selected and positions are displayed.

① The Position Bar can be turned on and off as appropriate. Use **Tools > Position Bar**.

The **Status Bar** found along the bottom of the screen is a useful reference. It provides some helpful ideas on how to use the currently selected tool and also provides information on the number of items that are currently selected, width of the window and scale.

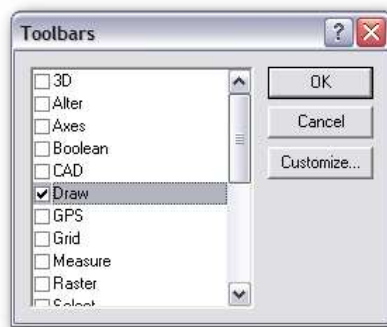
Other Tool Bars

By default on installation only the **Standard** and **View Toolbars** are in view. Further **Toolbars** can be displayed using **Tools > Toolbars**.

- ① A Right-Click local menu is also available on the grey Toolbar area, for example, to the top right of the screen.

Activity

Turn on the **Draw** and **Select Toolbars** using **Tools > Toolbars**



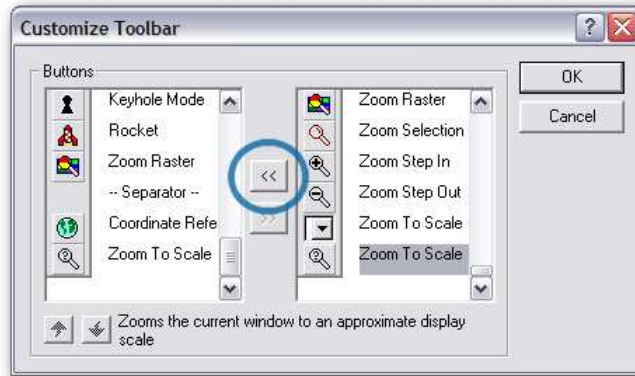
The **Standard** and **View Toolbars** should already be visible; if not make sure these are on.

Reposition the **Toolbars** if required. Close down SIS using **File > Exit** or using the cross at the top right of the screen.

Re-start SIS and the **Toolbars** and their position should be remembered.

Using the **Toolbars** dialog select the **View Toolbar** and click **Customize** which allows addition of further tools to a toolbar for this session.

Add the **Zoom to Scale** button to the **View Toolbar**. Select the tool on the right-hand side list and use the central arrows pointing to the left to add. Click OK to finish:



The tool will be included on your **Toolbar**:

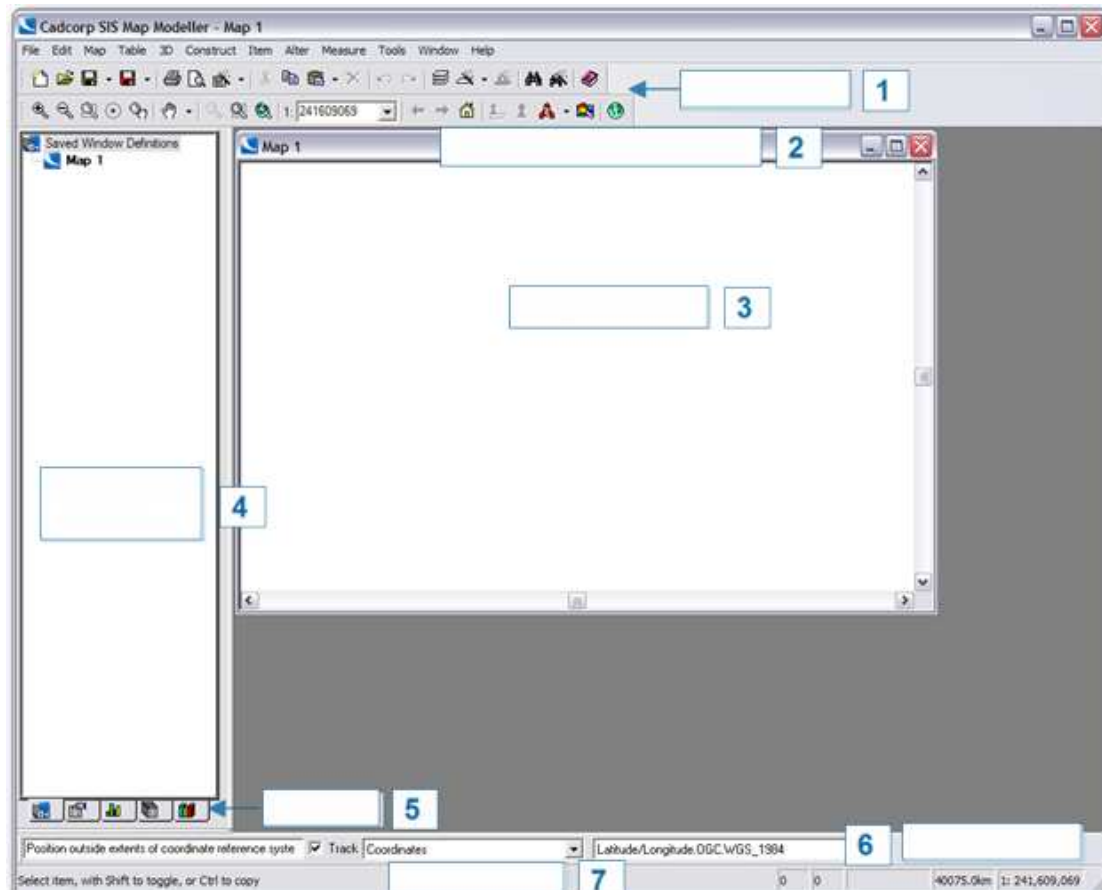


i This button will only stay for the session; an administration function exists to permanently alter **Toolbars**.

Close down SIS using one of the methods above.

Exercise

1. Start SIS using the Windows Taskbar or Windows shortcut.
2. Label the main elements of the Cadcorp SIS interface:
 - Map Window
 - Map Window Title Bar
 - Menus
 - Position Bar
 - Status Bar
 - Toolbars
 - Workspace Window



In Summary

Cadcorp SIS:

- Is a GIS;
- Is a name used to describe the whole product range;
- Makes use of the mouse and keyboard;
- Has a configurable interface.

Conclusion

You should now be able to:

- Start the system from the Windows taskbar or Windows shortcut;
- Be familiar with menus and toolbars;
- Identify the main elements of the interface.

Self Assessment

Place a tick in the following boxes once you feel that you have understood the module objectives and that you are happy that you can repeat the processes again with these notes but in an unsupervised environment.

| | |
|---|--------------------------|
| I am capable of starting Cadcorp SIS | <input type="checkbox"/> |
| I understand what menus and toolbars are | <input type="checkbox"/> |
| I can turn toolbars on and off and move them around the screen | <input type="checkbox"/> |
| I understand what the major components of the system are and I can locate and name them | <input type="checkbox"/> |

IF YOU CANNOT TICK EACH OF THE BOXES ABOVE, OR IF YOU REQUIRE ASSISTANCE, PLEASE ADVISE YOUR INSTRUCTOR BEFORE COMMENCING THE NEXT MODULE.